



# Research Facilities

## Scientific Equipment Center

**Eyla Maoz, Ph.D**

Head of the scientific Equipment Center  
The Azrieli Faculty of Medicine

Tel: +972-72-2644936  
[Eyla.Maoz@biu.ac.il](mailto:Eyla.Maoz@biu.ac.il)

- Microscopy
- Flow cytometry
- SEM
- Chromatography & Spectrometry
- Histology
- In Vivo Imaging
- Gel Imaging
- Molecular Biology

## Genome Technology Center (GTC)

**Shira Perez, Ph.D**

Head of the Genome Technology Center  
The Azrieli Faculty of Medicine

Tel: +972-72-2644903  
[Shira.Perez@biu.ac.il](mailto:Shira.Perez@biu.ac.il)

- NGS
- DNA/RNA library prep
- Bioinformatics services



## Pre-Clinical Facility

**Roey Lahav, DVM**

Head of the Animal Facility  
The Azrieli Faculty of Medicine

Tel: +972-72-2644966  
[Roey.Lahav@biu.ac.il](mailto:Roey.Lahav@biu.ac.il)

- Advanced SPF rodent
- Germ Free
- Pathogen\BSL3
- Zebra Fish (Danio rerio)
- Frogs





# Scientific Equipment Center- Units:



## Light Microscopy

- Super Resolution/ 3D STED
- Confocal/Multi-Photon
- Live Imaging / Time Lapse
- Slide Scanner
- Fluorescent Upright with Apotome
- Wide Field Fluorescent
- Laser Microdissection
- Incubated fluorescent Microscope
- Imaris/Hyugens (Image analysis)

## SEM

- Merlin™ Scanning Electron Microscope
- High quality preparation of Biological samples
- High resolution sputter coater
- Cryo ultra-microtome
- Correlative epi-fluorescent and electron microscopy

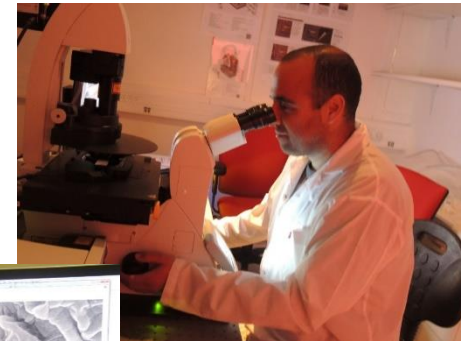
## Flow Cytometry

- Sorters in Biological Hood (FACS)
- Flow Cytometer (Analyzer)
- Image Cytometer
- Analysis software

## Small Animal Imaging

- **PET-CT**
- Micro CT
- **Pearl (Far red Imaging)**

## Radioactive Room





# Scientific Equipment Center- Units (Continue)



## Chromatography and Spectrometry Unit

- MALDI TOF
- GC/MS/FID
- HPLC
- FPLC
- **MagPix**
- Octet Red
- **Pamstation**
- MST
- Plate reader

## Gel Imaging Unit

- Chemiluminescence
- Far Red Imaging
- Fluorescent Scanner
- EtBr

## Molecular Biology Unit

- UV crosslinker
- RT-PCR
- Peptide synthesizer
- Liquid handling system
- Cell irradiation system (up to 50 Gy/min)

## Histology Unit

- Microtome
- Cryostat
- Paraffin embedding station





# Pre-Clinical Facility

- Highly trained and dedicated staff
- Support extensive and comprehensive research services
- Support facilities include:
  - GERM FREE
  - SPF\BSL 2\3.
  - Small imaging facility
  - Biohazard housing at the BSL2 and BSL3 levels
- Animal rooms are maintained at ventilation, temperature and humidity levels appropriate for the species of animal in the room



Bar-Ilan University  
The Azrieli  
Faculty of Medicine



אוניברסיטת בר-אילן  
הפקולטה לרפואה  
ע"ש עזריאלי





# Genome Technology Center (GTC)

One stop shop service from Project Planning & Design, throughout Library Preparation (DNA, RNA, sRNA, Exome sequencing, targeted sequencing) Sequencing, bioinformatics & Data Analysis

## Equipment:

- MiSeq, NextSeq, HiSeq Illumina sequencers
  - NextSeq – up to 400 M reads; HiSeq-up to 2 billion;
  - MiSeq – 1-25 M reads
- Accompanied equipment: Covaris (S220,E220), Qubit, Tapestation, Bioanalyzer, SpeedVac, Bravo
- Advanced Equipment:
  - Fluidigm (IFC controller, C1, FC1);
  - NanoString-nCounter™ Sprint

